

Scandishake Mix

An oral supplement, high in energy (2kcal/ml) designed for the needs of those with cystic fibrosis.

Presentation

6 x 85 g Sachets

Flavours

- Vanilla
- Strawberry
- Chocolate

Indications

Primarily indicated for cystic fibrosis patients above the age of 3 years

Features

- 2 kcal/ml when made with full cream milk, to meet high energy requirements (600kcal in 1 serve (300ml))
- 11.7g protein per serve when made with full cream milk
- High fat content to meet increased requirements
- Enriched with minerals to meet increased losses
- Gluten free
- Rich creamy flavours to help maximise patient compliance
- Convenient single serve sachets which are easy to mix and easy to take in school lunch boxes
- Osmolality 1000 mOsm/kg H₂O when made with full cream milk
- Recommended intake
 - Children < 5 yrs: ½ sachet + 240ml milk
 - Children 5-10 yrs: 1 sachet + 240ml milk
 - Children > 10 yrs: 1-2 sachets each with 240ml milk

Nutrient Source

- Protein: Milk proteins
- Fat: Partially hydrogenated vegetable oils (palm kernel & soy bean)
- Carbohydrate: Dried glucose syrup, maltodextrin, sugar

Contraindications

- Children under 3 years of age

Directions for Use

- Add contents of sachet to 240ml milk
- Stir briskly with fork or shake until smooth

Storage

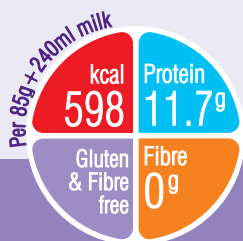
- Store in a cool, dry place
- Once opened, store in the refrigerator
- Discard unused content after 24 hours

Ordering Information

- To order, contact Biolab 0800 688 787

Scandishake Mix	Code	Units per carton
Vanilla	NUT72758	6 x 85g sachets
Chocolate	NUT72762	6 x 85g sachets
Strawberry	NUT72754	6 x 85g sachets

Scandishake Mix	Pharma code
Vanilla	2059002
Chocolate	2058995
Strawberry	2058987



Scandishake Mix

Nutrition Information		Per 100g	
Energy	kcal	507	
	kJ	2125	
Protein Equivalent	g	4.9	
Casien	g	4.4	
Whey Protein	g	0.5	
Nitrogen	g	0.76	
Carbohydrate	g	67	
	as Lactose	g	3.2
	Sucrose	g	14
Fat	g	24.5	
	as Saturates	g	7.7
	Monounsaturates	g	7.3
	Polyunsaturates	g	9.5
Fibre	g	0	

Vitamins		Per 100g
Vitamin A		µg-RE
Carotenoids		mg
Vitamin D		µg
Vitamin E		mg-α-TE
Vitamin K		µg
Vitamin C		mg
Thiamin		mg
Riboflavin		mg
Niacin		mg-NE
Vitamin B6		mg
Vitamin B12		µg
Folic Acid		µg
Pantothenic Acid		mg
Biotin		µg
Choline		mg
Carnitine		mg
Inositol		mg
Taurine		mg

Minerals		Per 100g
Sodium	mg	128
	mmol	5.6
Potassium	mg	272
	mmol	7.0
Calcium	mg	85
Phosphorus	mg	147
Magnesium	mg	30
Chloride	mg	163

Trace Elements		Per 100g
Iron		mg
Zinc		mg
Manganese		µg
Copper		µg
Iodine		µg
Molybdenum		µg
Selenium		µg
Chromium		µg
Fluoride		µg

Ingredients (Scandishake vanilla): maltodextrin, vegetable oil (soybean oil, palm oil), sucrose, skimmed milk, caseinate (from milk), emulsifier (mono- and di-glycerides of fatty acids), flavour (vanilla), di potassium hydrogen phosphate, sodium chloride, tri mangesium di citrate.

For more information call toll free:
0800 636 742 (#2)