

Renilon 7.5



A unique oral supplement with high energy (2kcal/ml) high protein (9.4g/tetra pack) and very low minerals, especially phosphorous (3.75mg/tetra pack).

Presentation

- 125ml tetra pack

Flavours

- Caramel
- Apricot

Indications

For renal patients requiring dialysis

Features

- 2.0kcal/ml (250kcal/125ml) for patients with fluid restriction and/or reduced appetite
- 9.4g protein per 125ml tetra pack for patients with a high protein requirement
- Very low mineral content; Na 590mg/1000ml, K 220mg/1000ml, P 30mg/1000ml for patients with impaired renal function
- Vitamin A not added to prevent hypervitaminosis
- 125ml volume for patients with fluid restriction
- Omega 6: Omega 3 ratio 6.7:1 supporting improved patient immunity
- High monounsaturated content for improved lipid profile
- Gluten and fibre free
- Added carotenoids reflecting general health recommendations for their antioxidant properties and positive affect on immune function
- Osmolality 580 mOsm/kg H₂O
- Recommended intake 2 tetra packs per day providing 18.8g of protein and 500kcal

Nutrient Source

- Protein: Milk proteins (whey protein isolate)
- Fat: Sunflower oil, canola oil
- Carbohydrate: Maltodextrin, fructose

Contraindications

- Children under 3 years of age
- Patients with Galactosaemia
- Used with caution in children aged 3-6 years

Directions for Use

- Shake well before use
- Best served chilled

Storage

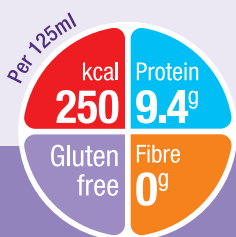
- Store in a cool, dry place
- Once opened, store in the refrigerator
- Discard unused content after 24 hours

Ordering Information

- To order, contact Biolab 0800 688 747

Renilon 7.5	Code	Units per carton
Caramel	NUT5459	30
Apricot	NUT5461	30

Renilon 7.5	Pharma code
Caramel	2245175
Apricot	2245825



Renilon 7.5

Nutrition Information		100ml	1000ml
Energy	kcal	200	2000
	kJ	840	8400
Protein Equivalent	g	7.5 (15%E)	75 (15%E)
Casein	g	0	0
Whey Protein	g	7.5	75
Nitrogen	g	1.2	12
NPC:N ratio		142	142
Carbohydrate	g	20 (40%E)	200 (40%E)
as lactose	g	0.06	0.6
Sucrose	g	0	0
Fat	g	10 (45%E)	100 (45%E)
as Saturates	g	0.9	9.0
Monounsaturated	g	7.2	72
Polyunsaturates	g	1.9	19
Ratio n6:n3 fatty acids		6.7:1	6.7:1
Fibre	g	0	0
Water	g	71	710

Vitamins		100ml	1000ml
Vitamin A	µg-RE	0	0
Carotenoids	mg	0.45	4.5
Vitamin D	µg	0	0
Vitamin E	mg-α-TE	5.0	50
Vitamin K	µg	11	110
Vitamin C	mg	6.0	60
Thiamin	mg	0.3	3.0
Riboflavin	mg	0.38	3.8
Niacin	mg-NE	3.6	36
Vitamin B6	mg	1.0	10
Vitamin B12	µg	0.47	4.7
Folic Acid	µg	100	1000
Pantothenic acid	mg	1.1	11
Biotin	µg	8.0	80
Choline	mg	40	400
Carnitine	mg	15	150
Inositol	mg	0	0
Taurine	mg	15	150

Minerals		100ml	1000ml
Sodium	mg	59	590
	mmol	2.6	26
Potassium	mg	22	220
	mmol	0.56	5.6
Calcium	mg	9.0	90
Phosphorus	mg	3.0	30
Magnesium	mg	1.0	10
Chloride	mg	11	110

Trace Elements		100ml	1000ml
Iron	mg	2.0	20
Zinc	mg	2.0	20
Manganese	µg	750	7500
Copper	µg	405	4050
Iodine	µg	28	280
Molybdenum	µg	15	150
Selenium	µg	16	160
Chromium	µg	12	120
Fluoride	µg	200	2000

Ingredients (Renilon 7.5 Caramel): demineralised water, maltodextrin, vegetable oils (sunflower oil, canola oil), milk proteins (whey protein isolate), fructose, carotenoids (contains soy lecithin) (β-carotene, lutein, lycopene), flavour (caramel), tri choline citrate, colour (caramel E150d), potassium hydroxide, tri sodium citrate, sodium L-ascorbate, taurine, L-carnitine, ferrous lactate, sodium hydroxide, DL-α-tocopheryl acetate, zinc sulphate, nicotinamide, sodium selenite, copper gluconate, manganese sulphate, pyridoxine hydrochloride, calcium D-pantothenate, folic acid, chromium chloride, D-biotin, thiamin hydrochloride, sodium fluoride, riboflavin, sodium molybdate, potassium iodide, phytomenadione, cyanocobalamin.

For more information call toll free:
0800 636 742 (#2)

