

Nutrison Protein Plus & Nutrison Protein Plus Multi Fibre

Nutritionally complete, energy dense (1.25kcal/ml), protein enriched (6.3g/100ml), ready-to-use, milk protein based tube feed without fibre (Nutrison Protein Plus) and with fibre (Nutrison Protein Plus Multi Fibre).

Presentation

- 1000ml pack

Indications

- Disease related malnutrition with moderate stress
- Increased protein requirements e.g. postoperative patients, severe burns, severe infections and pressure ulcers

Features

- 1.25 kcal/ml
- 63g protein/1000ml (20%En) to meet increased protein requirements
- NPC:N ratio 10:1 to maximise protein utilisation (standard feeds 13:4)
- Nutrison Protein Plus Multi Fibre contains 15g Multi Fibre mix (MF6)* per 1000ml
- Low Lactose (< 0.25g/1000ml)
- Gluten Free
- Osmolality
 - 355 mOsm/kg H₂O (Nutrison Protein Plus)
 - 360 mOsm/kg H₂O (Nutrison Protein Plus Multi Fibre)
- Recommended Daily intake 1500 – 2000ml

Nutrient Source

- Protein: Milk proteins (sodium caseinate, calcium caseinate)
- Fat: Vegetable oils (canola and sunflower)
- Carbohydrate: Maltodextrin
- Fibre: MF6* Multi Fibre Blend

Contraindications

- Infants younger than 1 year of age
- Patients with galactosaemia
- Use with caution in children aged 1-6 years

Nutrison Protein Plus Multi Fibre only

- Patients requiring a fibre free diet

Directions for Use

- Use at room temperature
- Shake well before use
- Handle aseptically to ensure product remains sterile

Storage

- Store in a cool, dry place
- Once opened, store in the refrigerator
- Discard unused content after 24 hours

Ordering Information

- To order, contact Biolab 0800 688 747

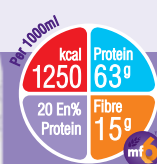
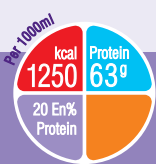
Nutrison Protein Plus	Code	Units per Carton
1000ml pack	NUT65678	8

Nutrison Energy Multi Fibre	Code	Units per carton
1000ml pack	NUT65680	8

Nutrison Energy Multi Fibre	Pharma code
1000ml pack	2148994
500ml pack	2148986



*MF6 is a unique, patented blend of six soluble and insoluble fibres (soy polysaccharide, cellulose, resistant starch, gum Arabic, oligofructose and inulin) reflecting the proportions of the different fibre types in a healthy diet.



Nutrison Protein Plus & Nutrison Protein Plus Multi Fibre

Nutrison Protein Plus/Nutrison Protein Plus Multi Fibre is nutritionally complete in 1800kcal where all nutrients meet 100% of the RDI/AI for all age groups and genders except for LCn-3, fibre, vitamin D (70+yrs), potassium, magnesium (male 31+yrs) & fluoride.

PP = Nutrison Protein Plus PPMF = Nutrison Protein Plus Multi Fibre

Nutrition Information		Per 100ml	Per 1000ml	
Energy	kcal	125	1250	
	kJ	525	5250	
Protein Equivalent	g	6.3 (20%E)	63 (20%E)	
Nitrogen	g	1	10	
NPC:N ratio		10-1	101	
Carbohydrate	g	14.1 (45%E)	142 (23%E)	
	as Lactose	g	<0.025	<0.25
	Sucrose	g	0	0
Fat	g	4.9 (35%E)	49 (35%E)	
	as Saturates	g	0.5	5.0
	Monounsaturates	g	2.9	29
	Polyunsaturates	g	1.5	15
Ratio n6: n3 fatty acids		5:1	5:1	
Fibre	g	0/15(PPMF)	0/15(PPMF)	
Water	g	810/800(PPMF)	810/800(PPMF)	

Vitamins		Per 100ml	Per 1000ml
Vitamin A	µg-RE	102	1020
Carotenoids	mg	0.25	2.5
Vitamin D		0.88	8.8
Vitamin E	mg-α-TE	1.6	16
Vitamin K	µg	6.6	66
Vitamin C	mg	12.5/13.0 (PPMF)	125/130 (PPMF)
Thiamin	mg	0.19	1.9
Riboflavin	mg	0.2	2
Niacin Equivalent	mg-NE	2.3	23
Vitamin B6	mg	0.21	2.1
Vitamin B12	µg	0.26	2.6
Folic Acid	µg	33	330
Pantothenic Acid	mg	0.66	6.6
Biotin	µg	5	50
Choline	mg	46	460

Minerals		Per 100ml	Per 1000ml
Sodium	mg	111	1110
	mmol	4.8	48
Potassium	mg	168	1680
	mmol	4.3	43
Calcium	mg	90	900
Phosphorus	mg	90	900
Magnesium	mg	28	280
Chloride	mg	139	1390

Trace Elements		Per 100ml	Per 1000ml
Iron	mg	2	20
Zinc	mg	1.5	15
Manganese	µg	410	4100
Copper	µg	225	2250
Iodine	µg	17	170
Molybdenum	µg	13	130
Selenium	µg	7.1	71
Chromium	µg	8.3	83
Fluoride	µg	130	1300

Ingredients Nutrison Protein Plus: Water, maltodextrin, milk proteins, (sodium caseinate, calcium caseinate) vegetable oils (canola oil, sunflower oil) tri potassium citrate, emulsifier (soy lecithin), acidity regulator (citric acid), sodium chloride, magnesium chloride, magnesium , hydrogen phosphate, di potassium hydrogen phosphate, calcium hydroxide, choline chloride, carotenoids (contain soy), (β-carotene, lutein, lycopene) tri sodium citrate sodium L-ascorbate, ferrous lactate, potassium hydroxide, zinc sulphate, nicotinamide retinyl acetate, DL-α-tocopheryl acetate, copper gluconate, manganese sulphate, sodium selenite, calcium D-pantothenate, chromium chloride, D-biotin, thiamin hydrochloride pyridoxine hydrochloride, pteroylmonoglutamic acid, cholecalciferol, cyanocobalamin sodium molybdate, riboflavin, sodium fluoride, potassium iodide, phytomenadione

Ingredients Nutrison Protein Plus: water, maltodextrin, milk proteins (sodium caseinate, calcium caseinate), vegetable oils (canola oil, sunflower oil) dietary fibres (soy polysaccharides, resistant starch, inulin, arabic gum, cellulose, oligo fructose), di potassium hydrogen phosphate, tri potassium citrate, emulsifier (soy lecithin), magnesium chloride, acidity regulator (citric acid) tri sodium citrate, sodium chloride, choline chloride, carotenoids (contain soy) (β-carotene, lutein, lycopene), calcium hydroxide, sodium L-ascorbate, magnesium carbonate, potassium hydroxide, ferrous lactate, zinc sulphate, nicotinamide, retinyl acetate, DL-α-tocopheryl acetate, copper gluconate, manganese sulphate, sodium selenite calcium D-pantothenate, chromium chloride, D-biotin, thiamin hydrochloride, pyridoxine hydrochloride, pteroylmonoglutamic acid, cholecalciferol, cyanocobalamin, sodium molybdate, riboflavin, sodium fluoride, potassium iodide, phytomenadione

For more information call toll free:
0800 636 742 (#2)

