

# NutriniDrink

# NutriniDrink Multi Fibre



A ready-to-drink, high energy (1.5kcal/ml) nutritionally complete milk-tasting oral supplement, without fibre (NutriniDrink) or with fibre (NutriniDrink Multi Fibre).

For children 1-12 years of age.

## Presentation

- 200ml plastic bottle

## Flavours

- Vanilla
- Strawberry
- Chocolate \*NutriniDrink Multi Fibre only

## Indications

- Disease related malnutrition in children

## Features

- 1.5kcal/ml
- Delicious flavours for maximum variety and to encourage compliance
- 6.8g protein per 200ml bottle
- Low lactose (< 0.02g/100ml)
- Gluten free
- NutriniDrink Multi Fibre contains 3g Multi Fibre mix (Mf6\*) per 200ml to help maintain normal bowel function
- Added carotenoids reflecting general health recommendations for their antioxidant properties and positive affect on immune function
- A higher percentage of fat, a lower percentage of protein and less fibre and iron compared to an adult supplement to cater specifically for the needs of children aged 1-12 years of age
- Suitable as sole source of nutrition or as nutritional supplement
- Convenient plastic bottle (with straw attached) designed to be easily held and with removable cap for easy pouring
- Osmolality: 595 mOsm/kg H<sub>2</sub>O (NutriniDrink)  
570 mOsm/kg H<sub>2</sub>O (NutriniDrink Multi Fibre)



\*MF6 is a unique, patented blend of six soluble and insoluble fibres (soy polysaccharide, cellulose, resistant starch, gum Arabic, oligofructose and inulin) reflecting the proportions of the different fibre types in a healthy diet.

## Nutrient Source

- Protein: Milk proteins
- Fat: Canola oil, sunflower oil
- Carbohydrate: Maltodextrin, sucrose
- Fibre: MF6\* Multi Fibre blend

## Contraindications

- Galactosaemia
- Patients requiring a fibre free diet \*NutriniDrink Multi Fibre only
- Children under 1 year of age

## Directions for Use

- Shake well before use
- Best served chilled

## Storage

- Store in a cool, dry place
- Once opened, store in the refrigerator
- Discard unused content after 24 hours

## Ordering Information

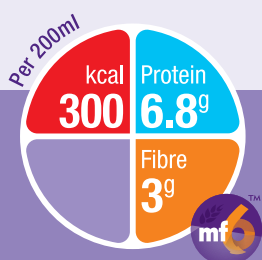
- To order, contact Biolab 0800 688 747

NutriniDrink	Code	Units per carton
Vanilla	NUT65580	24
Strawberry	NUT65582	24

NutriniDrink	Pharma code
Vanilla	2310597
Strawberry	2310600

NutriniDrink MF	Code	Units per carton
Vanilla	NUT65584	24
Chocolate	NUT65598	24
Strawberry	NUT65589	24

NutriniDrink MF	Pharma code
Vanilla	2310570
Chocolate	2310589
Strawberry	2310562



**NUTRICIA**  
**NutriniDrink**

# NutriniDrink

# NutriniDrink Multi Fibre

Nutrition Information		100ml	1000ml
Energy	kcal	150	1500
	kJ	630	6300
Protein Equivalent	g	3.4 (9%E)	34 (9%E)
Casein	g	3.4	34
Protein source		Caseinates	
Nitrogen	g	0.5	5.0
Carbohydrate	g	18.8 (50%E)	188 (50%E)
as lactose	g	<0.025	<0.25
Sucrose	g	3.0	30
Fat	g	6.8 (41%E)	68 (41%E)
as Saturates	g	0.7	7
Monounsaturated	g	4.1	41
Polyunsaturates	g	2.0	20
Ratio n6:n3 fatty acids		5:1	5:1
Fibre	g	0/1.5	0/15
Soluble/insoluble		60:40	60:40
Water	g	78/77	780/770

Vitamins		100ml	1000ml
Vitamin A	µg-RE	61	610
Carotenoids	mg	0.15	1.5
Vitamin D	µg	1.5	15
Vitamin E	mg-α-TE	1.9	19
Vitamin K	µg	6.0	60
Vitamin C	mg	15	150
Thiamin	mg	0.23	2.3
Riboflavin	mg	0.24	2.4
Niacin	mg-NE	1.7	17
Vitamin B6	mg	0.18	1.8
Vitamin B12	µg	0.26	2.6
Folic Acid	µg	23	230
Pantothenic Acid	mg	0.5	5.0
Biotin	µg	6.0	60
Choline	mg	30	300
Carnitine	mg	3.0	30
Inositol	mg	0	0
Taurine	mg	11	110

Minerals		100ml	1000ml
Sodium	mg	67	670
	mmol	2.9	29
Potassium	mg	140	1400
	mmol	3.6	36
Calcium	mg	84	840
Phosphorus	mg	75	750
Magnesium	mg	17	170
Chloride	mg	100	1000
Ca:P ratio		1.1:1	1.1:1

Trace Elements		100ml	1000ml
Iron	mg	1.5	15
Zinc	mg	1.5	15
Manganese	µg	230	2300
Copper	µg	135	1350
Iodine	µg	15	150
Molybdenum	µg	6.0	60
Selenium	µg	4.5	45
Chromium	µg	5.3 (9 Choc)	53 (90 Choc)
Fluoride	µg	110	1100

**Ingredients (NutriniDrink vanilla):** Water, maltodextrin, glucose syrup, vegetable oils (canola oil, sunflower oil) milk proteins (sodium caseinate), sucrose, emulsifier (soy lecithin), tri potassium citrate tri calcium phosphate, magnesium chloride, flavour (vanilla) (contains milk), di potassium hydrogen phosphate, calcium chloride, choline chloride, carotenoids (contains soy) (β-carotene, lutein, lycopene) sodium L-ascorbate, potassium chloride, potassium hydroxide, taurine, ferrous lactate, zinc sulphate, L-carnitine, nicotinamide, DL-α-tocopheryl acetate, copper gluconate, retinyl acetate, sodium selenite, manganese sulphate, cholecalciferol, D-biotin, calcium D-pantothenate, thiamin hydrochloride chromium chloride, riboflavin, pyridoxine hydrochloride, pteroylmonoglutamic acid, potassium iodide, sodium fluoride, sodium molybdate, phytomenadione, cyanocobalamin

**Ingredients (NutriniDrink Multi Fibre vanilla):** water, maltodextrin, glucose syrup, vegetable oils (canola oil, sunflower oil), milk proteins (sodium caseinate), sucrose, dietary fibres (soy polysaccharides, inuline, oligo fructose, resistant starch, arabic gum, cellulose), emulsifier (soy lecithin), tri potassium citrate, tri calcium phosphate, magnesium chloride, flavour (vanilla) (contains milk), di potassium hydrogen phosphate, calcium chloride, choline chloride, carotenoids (contains soy) (β-carotene, lutein, lycopene), sodium L-ascorbate, potassium chloride, potassium hydroxide, taurine, ferrous lactate, zinc sulphate, L-carnitine, nicotinamide, DL-α-tocopheryl acetate, copper gluconate, retinyl acetate, sodium selenite, manganese sulphate, cholecalciferol, D-biotin, calcium D-pantothenate, thiamin hydrochloride, chromium chloride, riboflavin, pyridoxine hydrochloride, pteroylmonoglutamic acid, potassium iodide, sodium fluoride, sodium molybdate, phytomenadione, cyanocobalamin.

For more information call toll free:  
0800 636 742 (#2)

